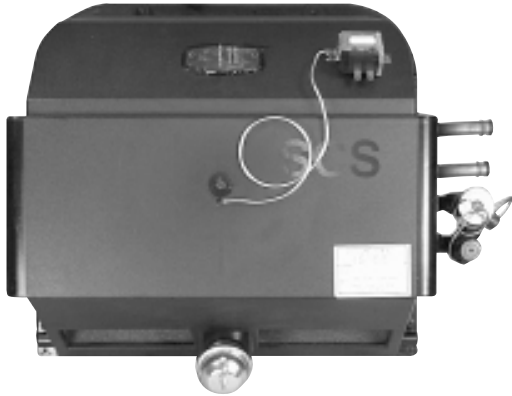


# MOTORHOME HVAC UNITS

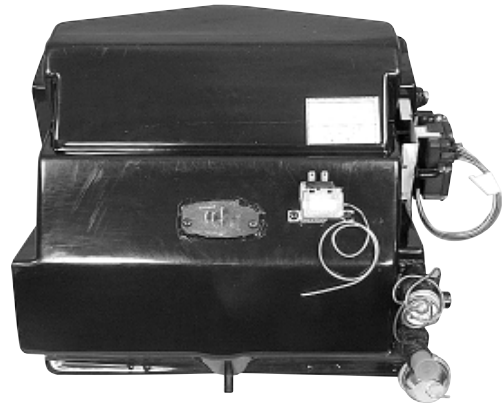
090-00413 for Unit without Hoses  
090-00414 with Hoses for GM / WCC Chassis with Tama Compressor  
090-00415 with Hoses for GM / WCC Chassis with Delphi Compressor  
090-00417 with Hoses for Ford Chassis with V10 Engine



MODEL HC206a

- One piece injection molded ABS case.
- Compact "Stacked Core" design.
- Heavy duty heater core suitable for high pressure applications.
- High capacity 36 tube evaporator coil.
- Available in various pre-charged configurations.
- Several interior plenum designs available.

090-00349  
BLEND AIR UNIT



- Blend Air system provides precise temperature control.
- Automotive V-cell heater core.
- High capacity 36 tube evaporator coil.
- Available in various pre-charged configurations.
- Several interior plenum designs available.

090-00392 Mounts on Driver Side of Firewall  
090-00422 Mounts on Passenger Side of Firewall

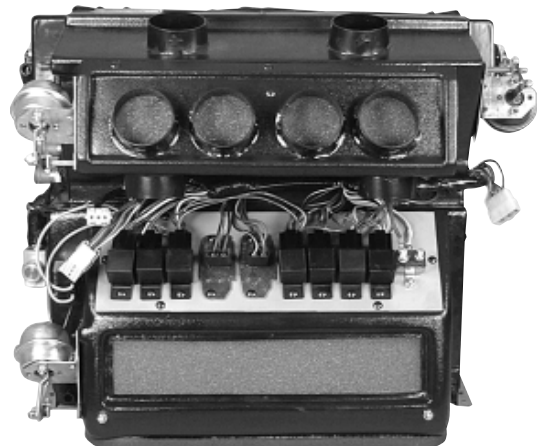


DUAL CONTROL UNIT

- Dual Blend Air system provides independent driver and passenger temperature and blower speed control.

Use Air Distribution Plenum 093-00536

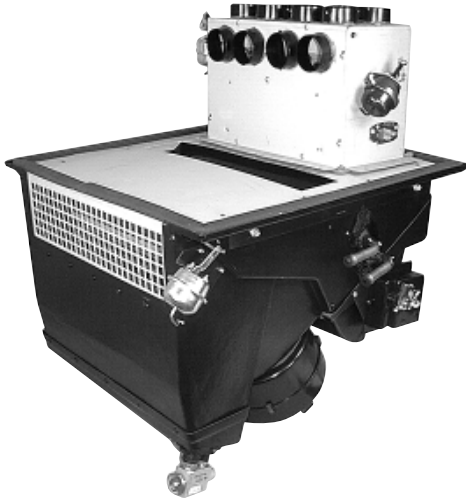
090-00390  
MODEL HC280



- Dual Blend Air system provides independent driver and passenger temperature and blower speed control.
- Compact design with integral air distribution plenum.
- Dual blowers and heater cores.

# MOTORHOME HVAC UNITS

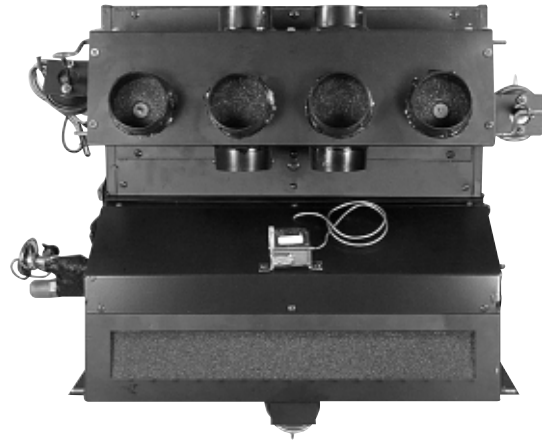
090-00420  
MODEL HC290



- Ultra high capacity dual blend air system.
- Unit mounts below floor for quiet operation.
- Provides independent driver and passenger temperature and blower speed control.
- Major components easily serviceable from below coach.

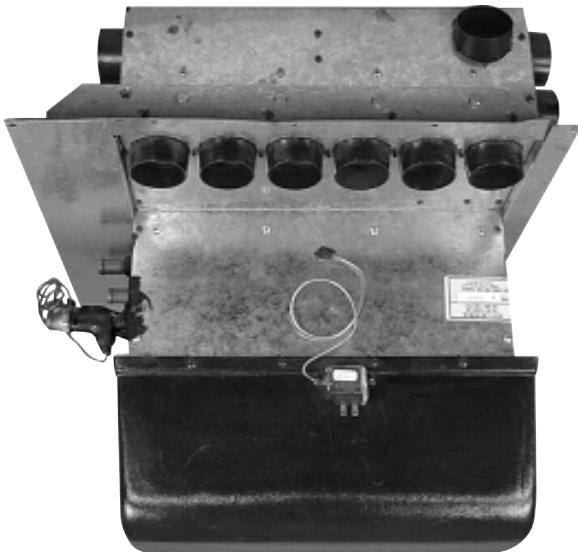
Shown with Part No. 093-00581 Plenum

090-00113  
MODEL HC210



- Blend Air system provides precise temperature control.
- Automotive V-cell heater core.
- High capacity 36 tube evaporator coil.
- Compact design with integral air distribution plenum.

090-00114  
MODEL HC212



- High capacity system with integral air distribution plenum.
- All doors operated by electric servos.
- High volume double blower assembly.