

BLOWER COMPONENTS

030-00001



Rotation CCW Viewing Shaft
Fits Blower Wheel 062-00002

030-00120



Long Life Motor
Rotation CCW Viewing Shaft
Fits Blower Wheel 062-00002

030-00121



Long Life Motor
Rotation CW Viewing Shaft
Fits Blower Wheel 062-00010

030-00137



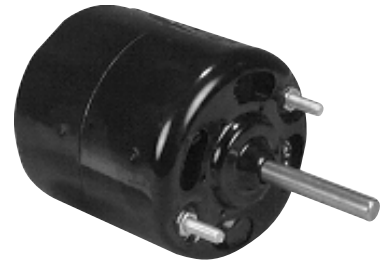
Rotation Viewing Clockwise
Fits Blower Wheels
062-00010, 062-00212

030-00028



3" Diameter
3" Body Length
10" Overall Length
12 Volt, Three Speed
5/16" Shaft

030-00005



3" Diameter
3-1/8" Body Length
5-3/4" Overall Length
12 Volt, Three Speed Reversible
5/16" Shaft

036-00501



Blower Motor
Jumper Wire

062-00002



Rotation CCW Viewing Inlet
5.72" Diameter x 3.65 Wide
Fits Blower Motor 030-00001
or 030-00120

062-00010



Rotation CW Viewing Inlet
5.72" Diameter x 3.65 Wide
Fits Blower Motor 030-00004 or
030-00121 or 030-00109

BLOWER COMPONENTS

062-00183



3.25" Diameter
Fits 5/16" Shaft
Used in Blower Assembly 083-00091

072-00019



Rotation CW Viewing Inlet
5.94" Diameter x 2.57" Wide
Fits 5/16 " Shaft

062-00027



Rotation CCW Viewing Inlet
5.94" Diameter x 2.57" Wide
Fits 5/16 " Shaft

062-00252



4.50" Diameter x 3.40" Wide
Fits 5/16" Shaft
Used in Blower Assembly 086-00102

062-00258



4.75" Diameter x 5.00" Wide
Fits 5/16" Shaft

083-00091



13.84" Wide
5" Tall
4.24" Deep